

# CAM181 Menu Instructions

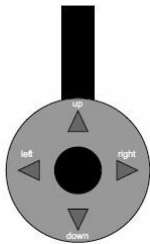
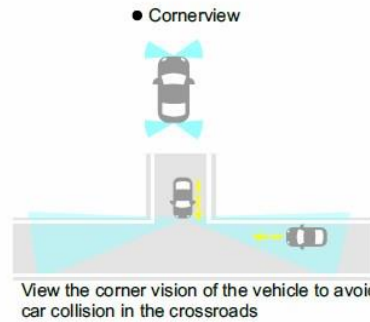
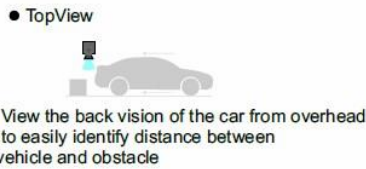
**Controller Operation:** This unit can be used to switch the image mode, view/hide the image modes and guideline, adjust the camera and the shape of guidelines

## Switch image mode:

The CAM181 camera system can display 6 kinds of image mode,

With an image displayed on the monitor, press the [OK] button to switch the image modes, Each press switches the image mode in the following order:

- UWV (Ultra Wide View: covering a horizontal angle of 192deg)
- NWV (Normal Wide View: Camera image covering a horizontal angle of about 130deg)
- TopView: Image seen from the viewpoint straight up above the vehicle, it is easy to identify distance between vehicle and obstacle
- CornerView: The views seen from the two corners of vehicle are displayed on the left and right halves of the screen
- NWV+CornerView
- UWV+TopView



"Press": press but don't hold the button  
 "Press and hold": press and hold the button up to 1.75 seconds

## Quick menu setting: [UP][DOWN][LEFT][RIGHT][OK]

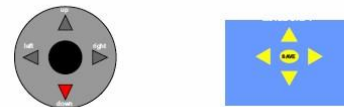
### [UP]

Press and hold [up] button to enter the the image ROTATION setting:  
 Press [left] to rotate whole image clockwise, or press [right] to rotate image anti-clockwise  
 Press [OK] to save the setting, or press and hold [OK] to abandon the setting



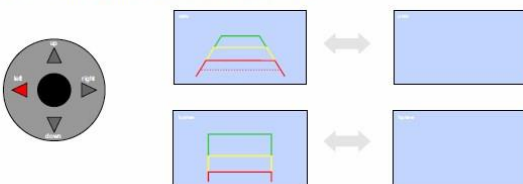
### [DOWN]

Press and hold [down] button to enter the the image shift setting:  
 Press [left][right][up][down] to shift the whole image left/right/up/down,  
 Press [OK] to save the setting, or press and hold [OK] to abandon the setting



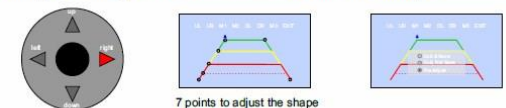
### [Left]

Press and hold [left] button to switch guideline on/off



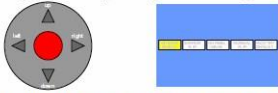
### [Right]

Press and hold [right] button to adjust the guideline  
 There totally 7 points for adjusting the shape in the following guideline  
 Press [OK] button to switch between the points,  
 When point is selected, press [up][down][left] or [right] to adjust the shape  
 After setting is finished, you can choose "Save" "Not save" or "Re-adjust"

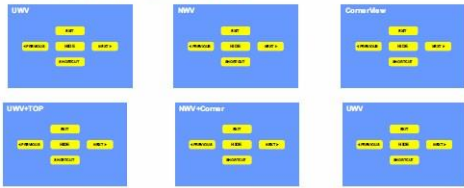


**More setting: main menu setting**

Press and hold [ok] button to enter the main menu, You can select the installation way of mirror image(rear view), normal image(front view), image vertical flip, factory default setting



After installation confirmed, then press [ok] to the next step to hide or activate the image modes and set shortcut: There are six image modes as below:



Press "PREVIOUS" or "NEXT" to switch between the six image modes



Press "Hide" or "Activate" to make the image activated or deactivated, Once deactivated, the image modes won't be displayed on the monitor



Shortcut: The four buttons can be set as quick access to any image mode from the six image modes  
 1. Press "SHORTCUT"(SC-1), enter the setting interface(SC-2),  
 2. Press any button from [up][down][left][right] arrow.  
 3. When the arrow become yellow, press "Save", and the new setting will be memorized



After exiting the main menu, you can access the image mode quickly simply by press the shortcut button

Press "exit", All the new setting will be memorized and exit the main menu.